



## 2015 Hadaseicha's Japanese Green Tea Price List (estimate)

It is estimate only, invoice will be sent out on Japanese Yen via PayPal.

115.3 JPY/USD Exchange Rate (including 3% currency change fee)

Orders due: 4/30 Shipping is around the end of May to mid June.

### Tea price & Packaging costs

Item	Thank You Loose Tea 5830		Thank You Tea Bag 6835		Thank You Broken Tea 4900		Additional Packing Costs	
	Kg	JPY	US\$	JPY	US\$	JPY	US\$	JPY
0.030	175	\$1.52	205	\$1.78	147	\$1.27	100	\$0.87
0.100	583	\$5.06	684	\$5.93	490	\$4.25	100	\$0.87
0.200	1,166	\$10.11	1,367	\$11.86	980	\$8.50	100	\$0.87
0.500	2,915	\$25.28	3,418	\$29.64	2,450	\$21.25	100	\$0.87
<b>1.000</b>	<b>5,830</b>	<b>\$50.56</b>	<b>6,835</b>	<b>\$59.28</b>	<b>4,900</b>	<b>\$42.50</b>	<b>100</b>	<b>\$0.87</b>
2.000	11,660	\$101.13	13,670	\$118.56	9,800	\$85.00	100	\$0.87
<b>5.000</b>	<b>26,235</b>	<b>\$227.54</b>	<b>30,758</b>	<b>\$266.76</b>	<b>22,050</b>	<b>\$191.24</b>	<b>0</b>	<b>\$0.00</b>

#### Package costs

Packing 1 bag cost 100 yen. Packages available in 30g, 100g, 200g, 500g, 1kg in aluminum bags.

#### Wholesale discount

5kg or more will receive a 10% discount. No charge for paper bag of 5kg or larger packages.

### Shipping & Handling

Tea weight	Shipping weight	Area 1 (Asia)		Area 2 (North & Central America, Oceania, Middle East, Caribbean)		Area 3 (Europe)		Area 4 (Africa, South America)	
		kg	JPY	US\$	JPY	US\$	JPY	US\$	JPY
0.150	0.300	900	\$7.81	1,200	\$10.41	1,500	\$13.01	1,700	\$14.74
0.300	0.500	1,100	\$9.54	1,500	\$13.01	1,800	\$15.61	2,100	\$18.21
0.500	0.800	1,520	\$13.18	2,040	\$17.69	2,400	\$20.82	3,120	\$27.06
<b>1.000</b>	<b>1.500</b>	<b>2,400</b>	<b>\$20.82</b>	<b>3,200</b>	<b>\$27.75</b>	<b>3,700</b>	<b>\$32.09</b>	<b>5,400</b>	<b>\$46.83</b>
2.000	2.500	3,500	\$30.36	4,700	\$40.76	5,400	\$46.83	8,500	\$73.72
<b>5.000</b>	<b>5.500</b>	<b>6,500</b>	<b>\$56.37</b>	<b>8,900</b>	<b>\$77.19</b>	<b>10,200</b>	<b>\$88.46</b>	<b>17,500</b>	<b>\$151.78</b>

Shipping is by EMS (International postal service), which takes about 3 days to North America.

EMS Info <http://www.post.japanpost.jp/english/fee/intel/ems.html>

Shipping weight includes tea and packaging. Handling fee is an estimate to adjust for shipping weight.

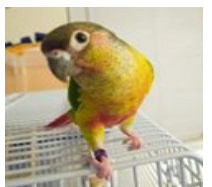
Customs tax may apply. Recipient to pay. USA is randomly selected. Most of Canada may apply.

### Order / Contact

<http://www.hadaseicha.com/en/order/>

We recommend you order just enough each year to enjoy the fresh flavor.

Thank you very much. Best wishes for your optimal health, beauty & happiness.



*I have been a loyal user for Hadaseicha's green tea-bag since 2003. Many other green teas I have tried ~~are~~ typically has some taste of staleness & bitterness. In comparison, Hadaseicha's is greenish & extremely fresh taste. Definitely it's the best green tea.*



## Shipping & Handling (HadaSeicha 2015 - estimate)

Tea weight kg	Shipping weight kg	Area 1 (Asia)		Area 2 (North & Central America,		Area 3 (Europe)		Area 4 (Africa, South America)	
		JPY	US\$	JPY	US\$	JPY	US\$	JPY	US\$
<b>0.150</b>	<b>0.300</b>	<b>900</b>	<b>\$7.81</b>	<b>1,200</b>	<b>\$10.41</b>	<b>1,500</b>	<b>\$13.01</b>	<b>1,700</b>	<b>\$14.74</b>
<b>0.300</b>	<b>0.500</b>	<b>1,100</b>	<b>\$9.54</b>	<b>1,500</b>	<b>\$13.01</b>	<b>1,800</b>	<b>\$15.61</b>	<b>2,100</b>	<b>\$18.21</b>
0.350	0.600	1,240	\$10.75	1,680	\$14.57	2,000	\$17.35	2,440	\$21.16
0.400	0.700	1,380	\$11.97	1,860	\$16.13	2,200	\$19.08	2,780	\$24.11
<b>0.500</b>	<b>0.800</b>	<b>1,520</b>	<b>\$13.18</b>	<b>2,040</b>	<b>\$17.69</b>	<b>2,400</b>	<b>\$20.82</b>	<b>3,120</b>	<b>\$27.06</b>
0.600	0.900	1,660	\$14.40	2,220	\$19.25	2,600	\$22.55	3,460	\$30.01
0.700	1.000	1,800	\$15.61	2,400	\$20.82	2,800	\$24.28	3,800	\$32.96
0.800	1.250	2,100	\$18.21	2,800	\$24.28	3,250	\$28.19	4,600	\$39.90
<b>1.000</b>	<b>1.500</b>	<b>2,400</b>	<b>\$20.82</b>	<b>3,200</b>	<b>\$27.75</b>	<b>3,700</b>	<b>\$32.09</b>	<b>5,400</b>	<b>\$46.83</b>
1.250	1.750	2,700	\$23.42	3,600	\$31.22	4,150	\$35.99	6,200	\$53.77
1.500	2.000	3,000	\$26.02	4,000	\$34.69	4,600	\$39.90	7,000	\$60.71
<b>2.000</b>	<b>2.500</b>	<b>3,500</b>	<b>\$30.36</b>	<b>4,700</b>	<b>\$40.76</b>	<b>5,400</b>	<b>\$46.83</b>	<b>8,500</b>	<b>\$73.72</b>
2.500	3.000	4,000	\$34.69	5,400	\$46.83	6,200	\$53.77	10,000	\$86.73
3.000	3.500	4,500	\$39.03	6,100	\$52.91	7,000	\$60.71	11,500	\$99.74
3.500	4.000	5,000	\$43.37	6,800	\$58.98	7,800	\$67.65	13,000	\$112.75
4.000	4.500	5,500	\$47.70	7,500	\$65.05	8,600	\$74.59	14,500	\$125.76
4.500	5.000	6,000	\$52.04	8,200	\$71.12	9,400	\$81.53	16,000	\$138.77
<b>5.000</b>	<b>5.500</b>	<b>6,500</b>	<b>\$56.37</b>	<b>8,900</b>	<b>\$77.19</b>	<b>10,200</b>	<b>\$88.46</b>	<b>17,500</b>	<b>\$151.78</b>
5.500	6.000	7,000	\$60.71	9,600	\$83.26	11,000	\$95.40	19,000	\$164.79
6.500	7.000	7,800	\$67.65	10,700	\$92.80	12,300	\$106.68	21,100	\$183.00
7.500	8.000	8,600	\$74.59	11,800	\$102.34	13,600	\$117.95	23,200	\$201.21
8.500	9.000	9,400	\$81.53	12,900	\$111.88	14,900	\$129.23	25,300	\$219.43
9.500	10.000	10,200	\$88.46	14,000	\$121.42	16,200	\$140.50	27,400	\$237.64
10.500	11.000	11,000	\$95.40	15,100	\$130.96	17,500	\$151.78	29,500	\$255.85
11.500	12.000	11,800	\$102.34	16,200	\$140.50	18,800	\$163.05	31,600	\$274.07
12.500	13.000	12,600	\$109.28	17,300	\$150.04	20,100	\$174.33	33,700	\$292.28
13.500	14.000	13,400	\$116.22	18,400	\$159.58	21,400	\$185.60	35,800	\$310.49
14.500	15.000	14,200	\$123.16	19,500	\$169.12	22,700	\$196.88	37,900	\$328.71
15.500	16.000	15,000	\$130.10	20,600	\$178.66	24,000	\$208.15	40,000	\$346.92
16.500	17.000	15,800	\$137.03	21,700	\$188.20	25,300	\$219.43	42,100	\$365.13
17.500	18.000	16,600	\$143.97	22,800	\$197.75	26,600	\$230.70	44,200	\$383.35
18.500	19.000	17,400	\$150.91	23,900	\$207.29	27,900	\$241.98	46,300	\$401.56
19.500	20.000	18,200	\$157.85	25,000	\$216.83	29,200	\$253.25	48,400	\$419.77
20.500	21.000	19,000	\$164.79	26,100	\$226.37	30,500	\$264.53	50,500	\$437.99
21.500	22.000	19,800	\$171.73	27,200	\$235.91	31,800	\$275.80	52,600	\$456.20
22.500	23.000	20,600	\$178.66	28,300	\$245.45	33,100	\$287.08	54,700	\$474.41
23.500	24.000	21,400	\$185.60	29,400	\$254.99	34,400	\$298.35	56,800	\$492.63
24.500	25.000	22,200	\$192.54	30,500	\$264.53	35,700	\$309.63	58,900	\$510.84
25.500	26.000	23,000	\$199.48	31,600	\$274.07	37,000	\$320.90	61,000	\$529.05
26.500	27.000	23,800	\$206.42	32,700	\$283.61	38,300	\$332.18	63,100	\$547.27
27.500	28.000	24,600	\$213.36	33,800	\$293.15	39,600	\$343.45	65,200	\$565.48
28.500	29.000	25,400	\$220.29	34,900	\$302.69	40,900	\$354.73	67,300	\$583.69
29.500	30.000	26,200	\$227.23	36,000	\$312.23	42,200	\$366.00	69,400	\$601.91